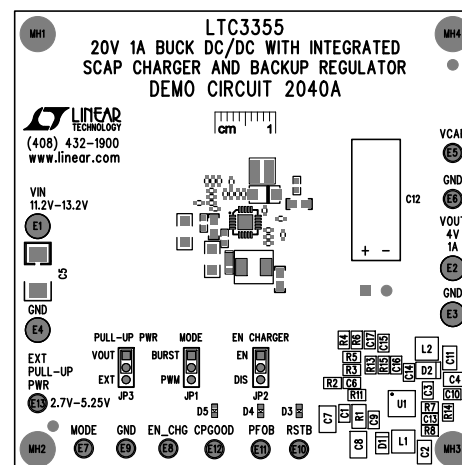


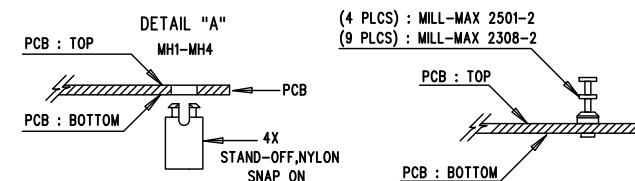
REVISION HISTORY				
ECO	REV	DESCRIPTION	APPR	DATE
-	3	PRODUCTION	MARTY M.	12-19-13



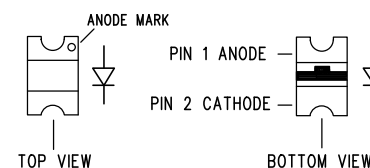
SEE DETAIL "A"

NOTES: UNLESS OTHERWISE SPECIFIED

1. WORKMANSHIP SHALL BE IN ACCORDANCE WITH IPC-A-610.
2. ASSEMBLY PROCESS SHALL INCLUDE: REFLOW SOLDER TOP SIDE SMD. MAXIMUM SOLDER TEMPERATURE IS 240 DEGREES CELSIUS.
3. PARTS TO OMIT WILL BE SPECIFIED ON THE BILL OF MATERIALS. LOCATIONS OF OMITTED PARTS SHALL BE FREE OF SOLDER. MASK THE SOLDER STENCIL WHERE SMT PARTS ARE OMITTED.
4. INSTALL SHUNTS AS SHOWN ON ASSY DRAWING.
5. DEPANELIZE BOARDS AFTER ASSEMBLY AND ROUTE-OUT THE BREAKOUT TABS ON FOUR SIDES OF THE BOARD EDGE.
7. INSTALL TURRETS AND 4 STAND-OFFS AT FOUR CORNERS AS SHOWN BELOW:



8. INSTALL LED's D3, D4, AND D5 AS SHOWN:



9. INSTALL C12 AS SHOWN PER FIGURE 1 AND FIGURE 2.

FIG. 1 ASSEMBLY INSTRUCTIONS:

-CUT DOUBLE SIDED STICK- PART # 3M, MMM109

TAPE DIMENSIONS

LENGTH = 9mm

WIDTH = 5mm

FIG. 1

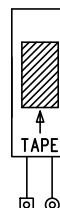
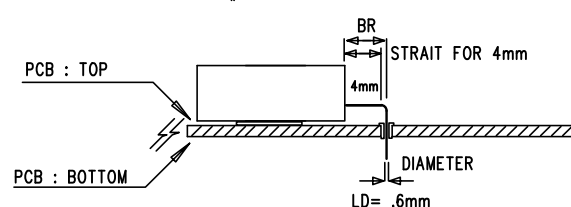



FIG. 2 PLACEMENT DIAGRAM:

PLACE C12 AS SHOWN, PART# NESSCAP, ESHR-0003C0-002R7



APPROVALS		 LINEAR TECHNOLOGY		1630 MCCARTHY BLVD MILPITAS, CA 95035 PH: (408)432-1900 www.linear.com LTC CONFIDENTIAL - FOR CUSTOMER USE ONLY	
PCB DES.	NC	TITLE: TOP ASSEMBLY DRAWING: 20V 1A BUCK DC/DC WITH INTEGRATED SCAP CHARGER AND BACKUP REGULATOR			
APP ENG.	MARTY M.				
		SIZE	IC NO.	LTC3355EUF	REV.
		N/A		DEMO CIRCUIT 2040A	3
SCALE = NONE		FILENAME: DC2040A-3.PCB		SHT 1 of 2	